



1952 - 2017

Camphill School Hermanus

# Annual REPORT

January-December  
2016

Private Residential and  
Day School for Children  
and Young Adults with  
Special Educational Needs



# Table of Contents

Chairman's Report .....	1
Principal's Report .....	3
Editors Report .....	5
Our School .....	6
Homelife .....	8
Admin & Maintenance .....	9
Therapies .....	10
Staff & Volunteer Training .....	11
Festivals & Cultural Life .....	12
Nelson's Story .....	14
Fundraising at Camphill .....	15
Donations to Camphill .....	16
Finances .....	18
Staff & Volunteers .....	20

## Camphill School Board Members

**Chairman:** Geoffrey Weir

**Vice-chair:** Elma Young

**Secretary / Treasurer:** Julio Laset

**Members:** Karin Laubscher

Mbongeni Mazuthu

Yvonne Mego

Ray Potton

Naomi May

## Camphill School Management Committee

**Principal:** Jeanne-Marié Botha

**Deputy Principal:** Michèle Lorton

**HOD Curriculum**

**Development:** Michèle Lorton  
Johanna Gardiner

**Facilities Manager:** Clint Fouche

**Head: Health,  
Therapeutic, Psychological  
& Social Services:** Julio Laset



# Chairman's REPORT

**Geoffrey R Weir,**

BSc, FCA, IBA, Chairman,  
Camphill School Board of Directors

As I reflect on the past year and my visits to Hermanus, to attend the regular monthly board meetings, despite the challenges we faced, I witnessed continual progress and happy children, resultant from the efforts of all those involved in striving to secure the future of Camphill School Hermanus.

The progress we achieve emanates from the dedicated support and involvement of our stakeholders, each providing a valuable contribution and input, all of which, is helping to shape our future. As Chairman of the Board of Directors and on behalf of all the directors, it is appropriate that recognition is given to an extremely enthusiastic, committed and skilled team of employees, co-workers, volunteers and a Senior Management Team, all operating under the guidance and the watchful eye of our Principal, Ms Jeanne-Marié Botha. A warm welcome is extended to all new people that have joined our team and our thanks and appreciation is extended to those that have moved on to pastures new.

Despite the many challenges we continually face, I would reiterate the importance of what I have said before, in relation to all those involved in delivering the education, care and support to our learners feeling supported in their tasks by the Board. To help ensure that our School meets this need, we continue to invest in our people, equipping them with the information and skills that allow them to provide the best level of education, care and support to our learners.

In line with their duties, the Board of Directors has exercised their responsibility, for ensuring proper arrangements are in place and all the business is conducted in accordance with law, regulatory and proper standards and the financial affairs of the

school are safeguarded, properly accounted for and used economically, efficiently and effectively, to allow the school to continue to develop for the benefit and well-being of all our learners.

In addition to our governance and fiduciary responsibilities, I can report that the Board of Directors are actively involved in overseeing, reviewing and updating the current and future strategies of the school, including a review of our register of risks that we may face and dealing with several other challenges that have arisen during the year. Despite our limited financial resources and due to an increase in the number of break-ins and thefts in the valley, we have been forced to upgrade our security across the school campus. We would hope that the measures taken, will help ensure the safety and well-being of all our people and these improvements will help deter or substantially reduce the number of incidents that have occurred.

Equally, the Board of Directors has recognised a need to invest in our structures, which improves the learning environment for our children and in this regard, many of you that visit our campus can see first-hand the efforts being made by the entire School team. Our school building, which was constructed in 1985 needs major repair and whilst we have carried out minor maintenance over the years, a full restoration is now required. Over and above the main school building, much more work is





needed, however, as Chairman, I am delighted to see that slowly we are helping to improve the buildings that we rely on so much. Obviously, the speed of the improvements is dictated by the funds available and I know that all involved are working strenuously to make this happen as quickly as possible.

As we continually strive to offer our learners choice, together with the best opportunities for their individual development, I am pleased to report that several new workshops have been introduced. These include sewing and craft workshops at Phoenix house, pottery and baking workshops at Cloister house, in addition to our existing wood workshop and gardening. Learners were also encouraged to start their own vegetable garden and thus far, this initiative is proving very productive.

I would encourage you to read the following pages of this Annual Report, as it identifies and highlights the many more significant events and improvements to the school, each being told in their own words by those with responsibility for leading these various initiatives.

In addition, the annual programme of organised events, to support the school, has continued to show-case the blossoming talents of our learners and the creativity of the staff. This programme in itself provides opportunities for all to learn new

skills and experience the thrill of organising a successful event. It is my hope and aspiration that the programme of events will continue to go from strength to strength and become a regular feature of the school calendar and the wider Hermanus community. My personal thanks and congratulations are extended to all those involved.

Needless to say, there are numerous others behind the scene who make a significant and on-going contribution to the school and it would be remiss of me not to mention a few. In particular, the Mayor and people of Hermanus, the Camphill Africa Region (CAR) and the Association of Camphill Communities in the UK and Ireland (AoCC) for their much needed financial and other support that continues to benefit the school. Heartfelt thanks goes to all others, who have and continue to provide support, your kindness and generosity is much appreciated and valued. I would like to thank all the kind donors, the Board Members, the School Management Team, our fund-raising team and all the staff and parents of our children for their unselfish contributions to maintain our School.

Finally, I would like to thank our learners for allowing us all to be part of their lives and for what they have taught us. I would also extend my personal thanks and appreciation to you, for taking the time to read and enjoy our Annual Report.





# Principal's REPORT

**Jeanne-Marié Botha**  
Principal

**C**amphill School is continuously striving to maintain a high standard of curative (holistic) education and care for our special needs learners within a therapeutic community. The past year was no exception and it took teamwork to achieve.

In May 2016 I was afforded/given the opportunity to represent the 4 African Camphill Communities at the AGM of the Association of Camphill Communities UK and Ireland in Milton Keynes, UK. Depending on whether the AoCC would be in a favourable position to do so, they pledged financial support for a further 3 year funding cycle to the African Communities. Camphill School will once again benefit from support for staff training and development, as well as for building and estate maintenance for which we are very grateful. Thank you very much to the AoCC for supporting and organising my travels to not only attend the AGM, but also to visit Camphill Communities in Scotland and in Northern Ireland. And to all the Communities who welcomed me so warmly; it was an amazing experience. Thank you.

We were pleased to appoint Johanna Gardiner as new HOD of Curriculum Development in October. We value her years of experience, her expertise and the enthusiasm which she brings to the team. Thank you to Michèle Lorton for her dedication in her roles as HOD and Deputy Principal since September 2014. We bid farewell to two teachers, Karin Sinclair and Rumbidzai Nyamakura Kamber, and to a class assistant, Mapaseka Niyila, during 2016. We are very grateful for their loyal service throughout the years.



On the 25th of October we held a lively and successful Parent/Teacher meeting to discuss our School's 5 year strategic plan. Parents, teachers and class assistants were divided into smaller groups where they identified what they appreciated about the school, improvements that they would like to see at the school in future, the way forward and how they as parents could contribute to the future of the school. It led to an interesting discussion with highlights being that parents knew that their children were loved and protected here, that each child is educated according to his/her own abilities and needs and that their children actually enjoy coming to school. Parents indicated that they would like to see more opportunities for vocational skills training in the future. A further strategic workshop will be held in the new year at board level.

Due to the fact that our buildings are old they are in constant need of maintenance. Therefore we were very grateful for the generous donation from Thornage Hall, a Camphill Community in East Anglia, and from Mr David Gurney who has been involved with Thornage Hall at Board level for many years, towards building a retaining wall behind our main school building in order to divert water away from the building and hereby saving the building from further damp and water damage.

A very generous donation from the Family and Friends of Camphill in the UK will also enable the school to build a multipurpose sports field which will

service our School as well as the Camphill Farm Community Hermanus.

Our School would like to thank the Hermanus High School Interact Club, the teachers involved and to Mr Hassenkamp, the Principal, for their friendship and continuous support throughout the year. Our learners have really enjoyed the valuable time that you have all spent with them. Once again the Interact Club prepared Santa Shoe boxes for each one of our learners. The boxes were individually wrapped and filled to the brim with clothing, toys, toiletries and treats. They came to handover the boxes on the 28th November with Father Christmas ready to hand out the specially wrapped boxes. Thank you for all your time and for the love that you share with our learners. These boxes of love bring so much joy to our learners.

We are eternally grateful to, above all, God, to all our donors, the Hermanus community, the Board, management and staff members and to our German volunteers who have helped us provide this safe haven for our special children in these heavenly surroundings.

**“Example is not the main thing in influencing others. It is the only thing.”**

**Albert Schweitzer**





A lit candle in a pink holder is shown in the upper left, with a small monkey peeking over a blue rock in the lower left. The background is a gradient of blue and yellow.

# THE EDITOR'S REPORT A Flame of HOPE

**Michelle van Zyl**  
(Snr PRO & Fundraiser) &  
**Genevieve Linney**  
(PRO and Fundraiser)

"The Camphill Movement is an attempt, an impulse, a community of men and woman who live and work in common for a spiritual purpose."

In 1939, Dr Karl König, an Austrian Paediatrician, together with a group of young professionals founded the first Camphill Community in Aberdeen Scotland for children with developmental disabilities. Camphill is inspired by Anthroposophy, a philosophy of Rudolph Steiner that seeks to integrate body, spirit and soul. Rudolf Steiner created this concept of curative education, which includes the arts as healing and educational forces and today his influence is still felt throughout all Camphill Communities.

There are over one hundred Camphill Communities worldwide in over twenty countries, all of which offer a unique service to children and adults with special needs, within in their respective communities.

Since 1952 our School has been part of this world-wide Camphill Movement which is much more than just a collection of individuals. Here we offer children and young adults a schooling opportunity, specialised care and holistic therapies which aid them in developing and growing to their full potential. The safe environment and the close interaction with nature surrounding our Community, adds a calming and supportive aspect to our lives here.

Every year representatives from each Camphill Community is encouraged to represent their community at the Camphill Movement group meeting.

This Movement Group is made up of delegates from the seven regions of Camphill (Scotland, England and Wales, Ireland, The Northern Region (Norway, Finland, Sweden, Estonia, Latvia and Russia), The Middle European Region, African Region (Botswana, South Africa), and Northern America). This group comprises board members, people with an interest in this cause, as well as employees and Camphill Community members. The Movement Group work on particular themes, an opportunity of sharing of insights, perceptions, knowledge about the movement and diverse manifestations.

Camphill Dialogue is held every three years to promote the associative work between the Camphill regions which provides a platform for board members within Camphill Communities worldwide, to discuss views, recommendations and advice, and to cultivate shared aims and ideals in the spirit of association.

The vision lives on here at our School and with each new generation striving to keep the flame of hope alive in the divinity of each being that is touched by the Camphill way of life.

# OUR SCHOOL

## KNOWLEDGE IS POWER

### The Teachers

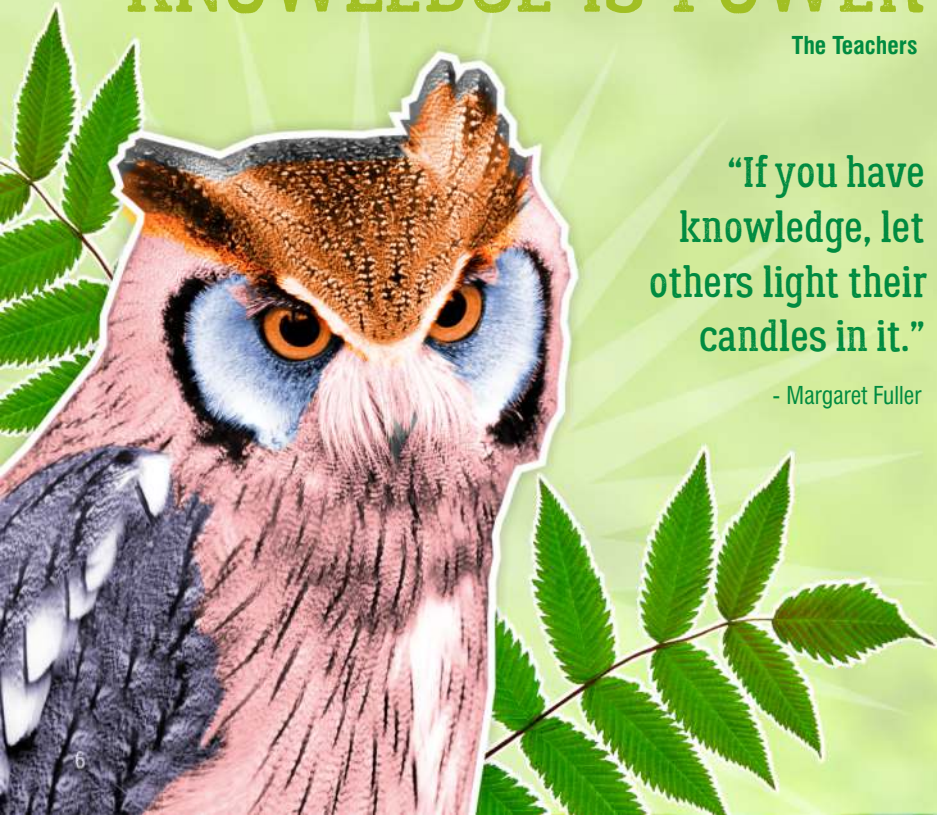
“If you have  
knowledge, let  
others light their  
candles in it.”

- Margaret Fuller

The School aims to uphold the dignity of each human being in its community and addresses the spiritual uniqueness in everyone, creating opportunities for developing each child's potential. Learning through creativity, music and movement are big parts of our day. Our School's reputation for excellent care and education continues since its founding in 1952.

The three core programs of Camphill School include (1) the specialized education, (2) residential care & support and (3) the therapeutic interventions for our learners with special needs. We implement our quality education by using the National Curriculum as foundation, the adaptations made by SA National Association for Specialised Education's (SANASE) in order to meet our learners' needs as well as the Camphill Curriculum. Every learner in our School has been assessed by our consultant Educational Psychologist and a specific developmental plan formulated for each learner.

There were a number of staff comings and goings throughout the year. We bid a sad farewell to teacher Rumbidzai Nyamakura Kamber who played a fundamental role in structuring the various workshops to enhance the vocational phase learner's skills. Her 10 years of dedicated commitment to the school and most importantly to the learners were valuable to the school's growth and progress. We welcome Liesl Fourie who has filled this position and will further the learner's life and vocational skills in preparation for life after school.







Our Foundation Phase Teacher, Karin Sinclair, left the school to pursue her dreams and in her place we eagerly welcomed Nadia Visser. The fundamental aim of the Foundation Phase is to expose young children to stimulating play and educational activities, the more solid their foundation for future development is likely to be.

Our School held our second successful Open Day in April with two time allocations set for the day. The visitors once again had the opportunity to explore all our classrooms and to interact with all our learners. Our learners sang to our visitors and had a chance to show them what they have made in their craft workshops. To end a busy day, pancakes and coffee were served by our senior classes.

In the first term we held our annual School Sports Day. Each class once again made up a team of its own colours and every child took part in one of the individual, relay or novelty races. It is a great opportunity to enhance team spirit and for the learners to express themselves through the joy of movement. We welcomed many parents who came to support their children.

The fun educational outings that took place are linked to the learner's curriculum - the senior classes visited Cape Town, the Iziko Museum, The Castle and the Planetarium as well as Robben Island. Thank you to the AoCC for sponsoring these outings. Foundation and Creative classes visited the airport and the Blue Train and the Intermediate class explored

the Cape Town Gardens. This was truly a privilege for our learners. The entire school including staff and volunteers went on a Spring Day picnic to Fernkloof Nature Reserve and to Grotto beach.

We had two memorable cultural events, Mandela Day and Heritage Day. For Mandela Day our senior learners and some staff members dedicated 67 minutes making more than 100 sandwiches to distribute to less fortunate members within our Community. The second highlight was Heritage Day where everyone had the opportunity to express their own tradition and showcased their traditional attire.

**This has indeed been a year of growth for all our learners, staff and volunteers at the school.**

# HOMELIFE

## A Sweet HOME

Angela Coetzee



Our residential homes, Phoenix and Cloister, are run under the supervision of two House Parents, assisted by several German volunteers, together with kitchen and housekeeping staff. Our German volunteers are sent through an organisation in Germany, called Freunde der Erziehungskunst, to dedicate a year of voluntary community service here at Camphill School. Fortunately we received 14 volunteers during July and August to assist in both residential homes and in the classrooms.

Cloister House has essentially been a boarding facility for our volunteers over the past years. However our House Parents and Management Team saw a need amongst our residential children to separate the teenagers from the younger children. The teenagers moved into Cloister House mid-year with half of the group of volunteers, whilst the younger children remained in Phoenix home.

This move proved to be beneficial to all residential children and young adults. This vital shift could not have been possible without the financial contribution and support from the belated Mr. Geoff Saevitzon, The Singer family, Adam and Laila Kustermann, the AoCC and an anonymous trust. These donors made it possible for us to upgrade Cloister kitchen and the six bathrooms to ensure that all needs are met and that it was a comfortable transition for all. This home is being supervised under the watchful eye of our new House Parent Lilian Teunissen and supporting staff Margaret Steneveld and Hans Peyerl.

Phoenix House kitchen continues to provide cooked nutritious meals to approximately 100 people per day, this includes lunch for all the learners and a snack, as well as three meals a day for all the residential children and volunteers.

Both residential homes have a warm, vibrant and welcoming atmosphere. The children are accommodated in one-or-two-bedrooms and the atmosphere created is as close to that of a typical family home, with the children carrying out household chores, according to their ability, having story-and game-times, as well as cultural activities and church services throughout the year.

Sewing and craft workshops were also created for our vocational phase learners in Phoenix House and in addition, a small vegetable and herb garden was initiated by Hans and some of our German volunteers. A baking workshop was also started at Cloister House to enhance our learner's life skills.

The Homelife Department of our School is essentially the heart of our Community where children feel loved in homely environments and are encouraged to develop spiritually, physically and emotionally to their full unique potential.

HOUSE + LOVE  
= HOME





# ADMIN and MAINTENANCE



**Michelle van Zyl** (Snr PRO & Fundraiser) &  
**Genevieve Linney** (PRO & Fundraiser)

**T**he maintenance and administrative teams work side by side. They are the worker bees who co-ordinate and organise the smooth running of the school throughout the year.

The maintenance team have an enormous task of keeping the school terrain, estate and all of the buildings in tip-top condition with limited resources. We are very grateful to Association of Camphill Communities (UK and Ireland) for providing funding for maintenance of the estate, restoring of buildings and training of staff members throughout the year.

As mentioned in our Annual Report 2015 we reported that we were concerned about the continuous outflow of expenditure on maintaining the busses travelling along the dirt road to drop off the learners to and from school. A HUGE thank you to Robert & Diddi Johnson, Minister Donald Grant (Government of the Western Cape Department of Transport), Mr Mannie van Eeden and Madame

Nicolette Botha-Guthrie for the smooth tarred road to our School and to the Camphill Farm. This project was completed within six months and has alleviated the extra financial burden on the vehicles as well as ensuring the safety of our learners.

We were blessed to receive funds from the Hermes Trust in the UK and from Vincent and Dympna Brogan. These generous funds were allocated to installing an additional Jungle Gym for our Intermediate and Foundation classes and to install a fence around this playground area. We thank these donors wholeheartedly. This project has been hugely beneficial to our foundation learners, not only creating more space for play for the young learners, but also creating a safe environment to facilitate their growth and development. Thank you also to Mourne Grange Camphill Community in Northern Ireland for their continued support to our Foundation phase class.

Throughout the year, we have seen an increase in

security breaches and this remains an ongoing concern. Although our School terrain is fenced and gated, opportunistic occurrences are still taking place. We have taken additional precautions to ensure the safety of our Community. We have installed several security cameras, added sensory lights in and around the estate and extra panic alarms in the all the residential homes.

On a 'lighter note' we have installed meter-readers in all the residential homes, to monitor the expenditure of our electricity consumption. As you can appreciate with running such a large establishment our electricity usage is one of the most costly items on our budget. This has created a much needed awareness amongst the whole Camphill Community to be cautious when it comes to their electricity usage.

We would like to once again express our gratitude to Mr Don Adams and to Mr Ian Hunter for conducting the school's audit so efficiently.

# THERAPIES

Julio Laset



The year 2016 has been a dynamic year at the Phila Therapy Centre of Camphill Community where the ranges of possible therapies are done in meeting the therapeutic needs of our learners. Simultaneously we try to work on an ongoing basis at strengthening the communication between the school staff and the therapists. We continued to do regular clinic visits, child studies and to have meetings with teachers, house parents and therapists, facilitating the identification and review of appropriate therapies provided for our learners. It was gratifying to see the benefits for the learners derived from these therapies.

The individual and group therapies were continued with our dedicated and committed team of therapists who really worked wholeheartedly with enthusiasm: Luise Boedinghaus and Geralyn Laset for conducting Eurythmy classes; Geralyn Laset for Therapeutic Eurythmy; Estelle Venter for Speech Therapy; Annetta Saaïman and Elana Nel for Occupational

Therapy; Daniel Kamber for the marimba and recorder classes and Christoph Reppel for music therapy; Beatrice Pook for etheric massage; Lizelle de Villiers of Klein Riding for horse riding therapy at Glenfruin; Felicia Jordaan, for physiotherapy; Nicole Knowles started play therapy for our learners from the second term. Lianna Morrison, our Educational Psychologist from Overberg Therapy Centre, continues to do the assessments of our learners and new admissions and counseling for some of our learners as well. We also welcomed back Asleigh Temple-Camp in the third term for doing Therapeutic Art for our learners. We are sad to say goodbye to Estelle Venter in the last school term and thanked her for her full dedication to our learners.

Our School strengthened our partnership with Hermanus Child Welfare and with Association of Persons with Disabilities (APD) in addressing the child protection and social concerns of some of our learners.



We would like to acknowledge our partner institutions; the Hermanus Provincial Hospital, Hermanus Child Welfare, the clinics in Hermanus, Zwelihle and Mt. Pleasant, as well as the Red Cross Children's Hospital and Tygerberg Hospital in Cape Town for all their support to our referrals to them.

We wish to commend our Fundraising team for raising funds to sustain therapy programs during this year. Generous funding from the Anglo American Chairman's Fund, as well as donations from Camphill Communities in England sent via Camphill William Morris made it possible to offer comprehensive and valuable therapy programs to our children.

**Therapies continue to form one of the pillars of holistic education at Camphill School.**

**PROUDLY SUPPORTED BY ANGLO AMERICAN**



# Staff & Volunteer TRAINING

Julio Laset

Annual staff appraisals afford the school the opportunity to assess staff training needs and to address these needs as we place strong emphasis on staff and volunteer skills development.

We conducted Foundation Year Training for the temporary young volunteers from Germany, who spend a year at the school, focusing on various topics such as anthroposophy, first aid, HIV AIDS, basic home care and the various medical conditions found amongst our learners.



The teachers attended the second part of the Beginner's Course on Makaton (sign language course) and a course on Self Regulation by Professional Minds hosted in Cape Town which form part of their training. They also had the opportunity to visit and observe other special schools particularly Vera School for Autistic Children in Rondebosch, Khanyisa Waldorf School for Supportive Education in Plumstead and Agulhas School of Skills in Napier. This provided them with the opportunity on sharing of ideas, knowledge and experiences amongst the teachers of both Camphill and other schools on curriculum, classroom and workshop activities. Our four Class Assistants also completed the Red Cross training on Cardio-Pulmonary Resuscitation (CPR).

In addition, Camphill School successfully hosted relevant trainings in partnership with trained facilitators and other organizations. The trainings included the Basic Occupational Health and Safety workshop presented by NOSA with selected staff from our School and representatives from Camphill Community Hermanus, Hermanus Waldorf School and Hermanus Private School. Ms Bev van Rensburg conducted The Adolescent Psychological Trauma Workshop which is the second part of the Building

Trauma Competent Caregivers Training Series which was conducted in 2015. This was attended by representatives from the Association for Persons with Disabilities, Brackenfell Police Victim Support Unit and Western Cape Education Department (WCED).

The two fundraisers were also able to attend the SDN Social Media Workshop, a strategic fundraising workshop hosted by the Children's Hospital Trust at the Red Cross Hospital and in addition an Active Leadership Community Development Workshop held at the end of the year.

As the Medical Officer at Camphill School, I attended the three day intensive course on TEACCH (Treatment and Education of Autistic and Related Communication Handicapped Children) at Vera School in Cape Town. A schedule of assistance to teachers on the implementation of this approach was put in place as part of re-echoing of training. I was also fortunate to attend the conference on Curative Education and Social Therapy in Dornach, Switzerland, as a representative of Camphill Africa.

**"Training teaches how. Education teaches why."**



# FESTIVALS AND CULTURAL LIFE

Julio Laset

In Camphill tradition, the passage of the year is marked by the celebration of Christian Festivals at the school. The festival themes forming part of the weekly religion lessons, strengthen the community spirit with the participation of all the learners and all the staff members.

In the first term we celebrated Epiphany with eurythmy. During Easter Holy week, the residential learners joined the Palm Sunday celebrations with the Camphill Farm Community. The Lenten symbols having been prepared beforehand in the classrooms.

On Ascension Day, we had a children's service, supported by the whole school community. We traditionally always climb up to the cross on top of the "Camphill Mountain" or to Castle Rock and the less able had their own drive up to the Rotary Way viewpoint. We ended with the blowing of bubbles in the school yard.

We celebrated the Whitsun Festival in our School assembly where we read John 1:1-5 in 13 different languages. Our music therapist, Christoph Reppel, provided music that created the solemn mood of the festival.

The school celebrated St. John's Festival with a lantern parade traversing the school grounds and the parade ended at St. John's Hall which was brightened by the lights from the beautiful lanterns prepared by the learners and teachers. The festival culminated with the gathering around a bonfire and the throwing to the flames pieces of paper where everyone had written things they want to change in their lives symbolizing change.

For the celebration of Michaelmas a puppetry show was held by Elizabeth Reppel, supported by one of our learners, Emmanuel Laset, and Farm resident Mark Meyers. For the first time, this festival was celebrated with an obstacle course which was designed by the teachers and German volunteers, participated by all the learners and staff. The obstacle course represented the dragons and life's challenges that can be conquered.

The Advent and Christmas festivals were ushered in by our traditional Advent Spiral Garden in Mercury Hall on 28 November which was also attended by the whole Camphill Community. The beautiful lyre and piano music created a peaceful and meditative mood throughout the ceremony.





Camphill School is once again very grateful to the Hermanus High School Interact Club for organizing Christmas boxes for our learners, which was distributed to all our learners after the Advent Spiral celebration. We were all enveloped by the children's joy and anticipation waiting for the countdown to all open their beautiful personalized boxes together made with love. We truly value the friendship between our learners and the Hermanus High School Interact Club.

We enjoyed our Secret Santa where all the learners and staff members formed a circle and exchanged handmade and personal gifts with one another. This was followed by our Christmas community lunch. A warm feast was prepared and we thank all donors who made this truly memorable.

The wonderful and colourful Nativity Play was attended by parents, friends and guests who would take something away to cherish and remember throughout the Christmas holidays. The Upper School and Creative classes presented a short eurythmy Advent play "Mary's journey through the stars". The highlight of the St. Nicholas Day celebration was the visit of St. Nicholas to all the classes wherein all the learners had joy of receiving his gifts. The year ended with the sharing of eurythmy performances by all classes. Our School leaver Kimberley Bouna performed an impressive solo tone eurythmy of "The Swan" by Camille Saint Saens.

We had Bible Supper in the residential houses on Saturday evenings throughout the year. Non-denominational Services are held each Sunday during the term for the residential learners and twice during the term for the whole school.

The school has also been busy with other cultural activities. The harmony of music continue to fill our hearts with the regular choir singing of the school every Friday with piano accompaniment by teacher Suzette. The end of term concerts with artistic and musical performances including eurythmy and singing provides opportunities to share to the community, the themes and highlights of the activities in school. Our energetic learners and staff had lots of fun on the School's Sports day which was well attended by parents and friends. The outreach of our learners to the Hermanus community continued with the singing to the residents of Kidbrooke Retirement Village. The Camphill Farm Orchestra performed for the school last November. One of our learners, Emmanuel Laset, is a member of the orchestra and he also did two short solo cello performances.

Other activities of the school included making sandwiches on Mandela Day and the clearing of the Fairy Woods (invasive), as one of the eco projects of the school. The vibrant singing and dancing with different colourful costumes of learners and staff highlighted the richness of the South African culture

in the celebration of Heritage Day. The learners and staff also dressed up for the celebration of Casual Day last September. The fragrance of blossoming flowers and with the joy and laughter of the children, filled the air in our School's Spring Day outing at Fernkloof Nature Reserve. Two of our learners, some co-workers and staff continue to participate in the Hermanus parkrun every Saturday morning.



# NELSON'S STORY

Steve and Louise Rundle



In July of 2009 we were blessed to welcome 5 month old Nelson Khoza into our family. He was a very ill vulnerable little boy. With the support of a dedicated medical team we were able to get a diagnoses and prognoses, both dismal! The best we could do was love love and love him. Slowly Nelsie started to respond and the smiles came.

As parents it always weighed heavily on our hearts "was our special boy going to integrate and feel accepted." Little did we know at that time that our life path would lead us to Hermanus and steer us to Camphill School's doorstep.

After only one week of Kindergarten (Foundation Phase) Michele Lorton made a comment Mr N, king

of the castle, HAS LANDED!! Our prayers have been answered.

The Kindergarten re-opened in 2009 with 4 learners. To date the Kindergarten is to full capacity with 12 learners aged between 5-10 years. As all the learners are intellectually and/or physically challenged, the foundation phase of any learners schooling is imperative and it is even more so for disabled learners. This phase is vital to build their foundation for future development. Communication between some of the learners and the Teacher and the Class Assistants is often by means of sign language, rather than speech.

The fundamental aim of the Foundation Phase is to

expose young children, such as Nelson, to stimulating play and educational activities, the more solid their foundation for future development is likely to be.

Indeed, we have already seen exciting progress in some of the learners from the first Foundation Phase, compared to those who entered the School later.

Nelson has found his special place and continues to amaze and bless us. He is assertive, confident and a little cheeky. He loves the odd sleepover at Phoenix House where he is loved and thoroughly spoilt.

We feel extremely privileged to be part of the Camphill Community and salute each and everyone for the role they play - bless you all.



# FUNDRAISING at CAMPHILL

**Michelle van Zyl** (Snr PRO & Fundraiser)  
& **Genevieve Linney** (PRO & Fundraiser)

A huge highlight on our calendar during the year was the news that Grand Gaming Slots Corporate Social Investment Company approved our application and they granted us a new 23-seater Mercedes-Benz Sprinter School Bus. Double excitement was that the tarred road would be completed with the new arrival of our bus. In addition a special thanks to Rola Motors Commercial Vehicles, Andre Potgieter (Helderberg) and Joanne Leuner (Bredasdorp) for all their generous support and safe delivery of this bus. The support of donors is essential in enabling Camphill School to provide services of a high standard to all our learners.

only about 23% of our budget, leaving the school to generate approximately 65% from other sources.

We do this through organising of fundraising events, submitting proposals to both corporate and philanthropic sectors locally and abroad, our Child Sponsorship Programme and encouraging all in-kind donations.

Participation, sponsorships and in-kind donations towards our fundraising events have been wonderful and aided in the financial successes of our events, as can be seen below:

• <b>Sports Challenge</b> .....	<b>R 26 251.00</b>
• <b>Street Collections</b> .....	<b>R 27 560.00</b>
• <b>Casual Day</b> .....	<b>R 17 691.00</b>
• <b>Allure Hair Couture hosted a winter trends collection</b> .....	<b>R 4 800.00</b>
• <b>Strauss &amp; Co Valuation Day</b> .....	<b>R 5 200.00</b>
• <b>Forest Fun Runs (Joint fundraiser with Overstrand Training Institute OTI)</b> .....	<b>R 6 275.00</b>

We placed huge emphasis on our public awareness within our local community Hermanus and have

formed valuable friendships with local schools that assist us with certain fundraising initiatives or simply come and spend time with our learners. We have received many visitors from the local churches, clubs and restaurants, all interested in the work that we are doing here and they leave with a full understanding, ready to share our story.

We would also like to acknowledge the important role all members of the local media have played, in particular, the Hermanus Times, The Village News, Whalecoast FM, Whaletalk magazine, Nosy Rosy and to ShowMe Hermanus and to all social media platforms for covering all our events and in creating awareness about our School.

We want to thank Dr Mickey Fauël and PSG Wealth Hermanus for jointly sponsoring the printing of this Annual Report and to Colourpix for assisting with the layout and design.

[www.myschool.co.za](http://www.myschool.co.za)



**If you have not signed up yet for your MySchool card, please sign up today. Every swipe counts.**



As 86 % of our learners are drawn from the locally disadvantaged communities within Hermanus, and parents can afford to pay little or nothing towards their school fees. As an independent school, the Western Cape Education (WCED) subsidy covers

# DONATIONS to Camphill School

## In-kind Donations (Jan - Dec 2016)



**W**e would like to express our sincere gratitude to all those that made donations in kind, no matter how big or small to Camphill School. We are deeply grateful, especially to our Hermanus community, for everything we receive. The greatest majority of all the items can be used by our learners, if our learners cannot use the items, we sell it, thereby generating additional income for the school.

It is impossible to mention all our generous donors, but we would like to specially thank the following:

- Lewis Store Pty Ltd (Washing Machine)
- Mr Arno van der Merwe from Midas Caledon (Car wash materials for workshops)
- Zahira Ismail (Meat donation)
- Overstrand Junior Town Council (Food Drive)
- The Toy Run Trust (100 toys for the learners at Christmas)
- Norma Leviton (Fridge and Chest Freezer)
- The Bridge Community UK and Tayo (Stationery, colouring books, wool)
- Enlighten Education Trust - Right-to-read project (Donation of books)
- Shana Horn, Alissa and Adele Coetzee (Food and clothing donations)
- Tony van der Merwe (Table Tennis Table)
- Tronel Meintjies, Hermanus Staans Saam (Clothing, games and toys)
- Stay Cool Distributors (Ice-cream donation)
- Mrs Loubser (Clothing donations and craft materials)
- NG Church Hermanus (Food donations)
- Susan Beukes (Craft materials)
- Hermanus High School Interact Club (Santa Shoe Boxes for all our learners, clothing and food drive, swimming equipment, Spring picnic)
- Michelle Riley (Carpets, crockery, food blender, bedding)
- Pick n Pay Hermanus (Easter eggs, food contributions towards events and outings)
- Engen convenience store, Peninsula Feeding Scheme, Woolworths Hermanus, Checkers Hermanus and Anja Brandt (For the continuous donations of food)





# MONETARY DONATIONS

Jan - Dec 2016 (R1000 & above)

## Over R 100 000

- Grand Gaming Slots Corporate  
Social Investment ..... R 581 226.00
- Camphill Africa region and  
Association of Camphill Communities  
UK and Ireland (AoCC) ..... R 342 889.00
- Anglo American  
Chairman's Fund ..... R 150 000.00

## R 50 000 - R 99 999

- Camphill Community  
Eastanglia Thornage Hall ..... R 91 991.00
- Camphill Solborg Norway ..... R 50 830.00
- Anonymous Educational Trust .... R 50 000.00
- Joan St Leger Lindbergh Trust .... R 50 000.00

## R 20 000 - R 49 999

- Acacia Trust  
(Susanne Elsholtz) ..... R 48 231.00
- Mourne Grange Camphill  
Community ..... R 44 526.00
- Western Cape Community Chest .. R 40 000.00
- Royal East Trading cc ..... R 36 000.00
- William Morris Camphill  
Community ..... R 34 696.00
- Freunde der Erziehungskunst  
(Child Sponsors) ..... R 26 430.00
- ABSA ..... R 25 000.00

- MySchool ..... R 22 002.00
- Syringa Trust ..... R 20 000.00
- EJ Lombardi Trust ..... R 20 000.00

## R 10 000 - R 19 999

- Camphill Farm Community  
Hermanus Eurythmy ..... R 18 900.00
- Lily Ashton Charitable Trust ..... R 18 365.00
- David Gurney ..... R 18 391.00
- Willem and Anette Theron ..... R 15 000.00
- Sonnet Cadle & Minnie James .... R 13 100.00
- Hermes Trust UK (Vincent  
and Dympna Brogan) ..... R 12 792.00
- Joshua King Foundation ..... R 12 000.00
- Alan Bailey Civil Engineering cc .. R 12 000.00
- Marine Crew Services SA Pty Ltd .. R 11 000.00
- Alfred Rosenberg & Associates .... R 10 800.00
- Anonymous Donor ..... R 10 250.00
- Viking Social & Upliftment Trust .. R 10 000.00

## R 5 000 - R 9 999

- Lewis Store ..... R 9 999.00
- Kustermann Family and Friends .... R 9 220.00
- German co-workers 2015/2016 ..... R 9 000.00
- Singer, Saevitzon Family & Friends.. R 7 360.00
- Victoria Frances Clive-Smith  
Charitable Trust ..... R 6 800.00
- Marine Visa Solutions ..... R 6 000.00

- Ad Ops ..... R 5 000.00
- Pick 'n Pay Ackerman Foundation .. R 5 000.00
- Truck City (PTY) Ltd Brackenfell .... R 5 000.00
- Old Mutual Care and Share ..... R 5 000.00

## R 1 000 - R 4 999

- Philip J Myburgh ..... R 4 800.00
- Frances J Appleby Trust ..... R 4 218.00
- Hermanus Primary School ..... R 4 135.00
- Peggy Grant Trust ..... R 4 095.00
- Cashkows Hermanus ..... R 4 000.00
- Christian Abele, Anika & Kay  
O Kissling and German friends ..... R 4 000.00
- Internationale Hulpfonds ..... R 3 000.00
- Jan and Letanie Nel ..... R 2 821.00
- JET LEE Will Trust ..... R 2 550.00
- JDE Manufacturing ..... R 2 500.00
- J van Tonder ..... R 2 500.00
- Walkerbay Walkers ..... R 2 000.00
- Margate Lalla ..... R 1 800.00
- Kerrin Michelson ..... R 1 600.00
- J Ven ..... R 1 000.00
- Rusty Demmer ..... R 1 000.00
- Lucie Cluver ..... R 1 000.00
- Artmode ..... R 1 000.00

# FINANCES

Summary of the audited Financial Statements of Camphill School (Incorporated Association Not for Gain) for the period between January 2016 and December 2016 is set out below.

A certified copy of the full Financial Statements is available from the School on request.



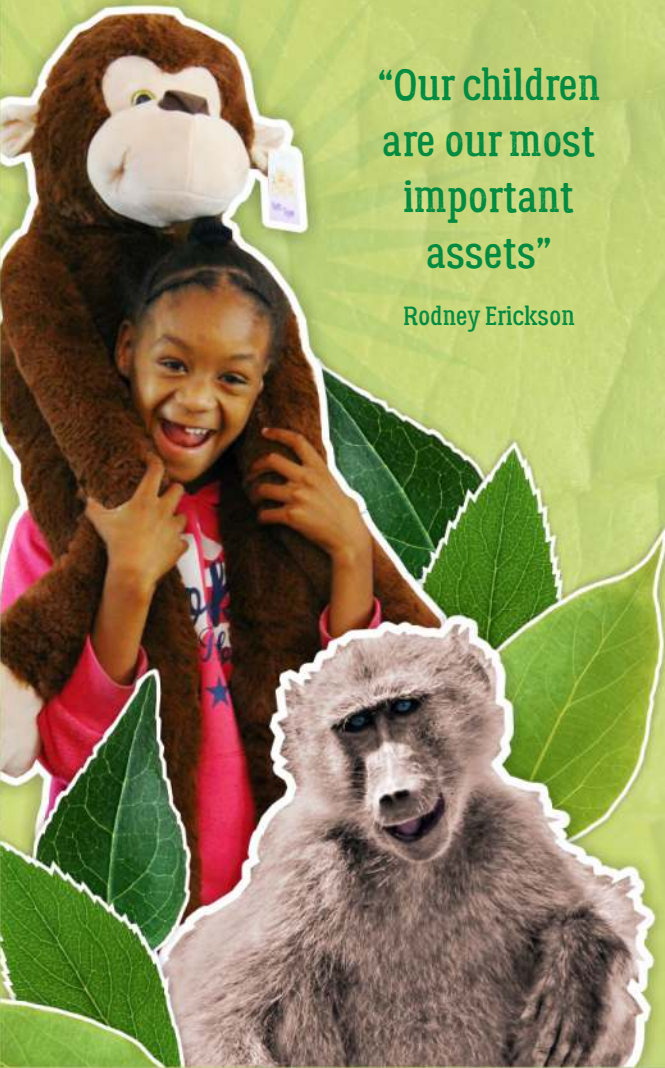
## Statement of Financial Performance

	Year 2016 31 Dec	Year 2015 31 Dec
<b>REVENUE</b>		
Rendering of Services	711 793	872 003
Child Sponsorship	173 492	158 970
Donation from Lotto	0	0
Donations	1 322 245	1 019 402
Donations - specified	439 267	0
Donation - Community Chest	40 000	0
<b>Subtotal Income</b>	<b>2 686 797</b>	<b>2 050 375</b>
<b>Other Income</b>		
Recoveries	36 263	26 925
Fundraising	122 761	192 484
Other Income	142 037	131 692
Interest Received	164 383	156 305
Gains on Disposal of Assets	0	0
Government Grants	1 533 879	1 483 918
Fair Value Adjustments	631 527	0
<b>Subtotal Other Income</b>	<b>2 630 850</b>	<b>1 991 324</b>
<b>EXPENSE</b>	<b>(4 533 412)</b>	<b>(4 085 102)</b>
Operating (Loss) Profit	784 235	(43 403)
Transfer to Building Fund	(9 000)	0
<b>(Loss) Profit for the year</b>	<b>775 235</b>	<b>(43 403)</b>



“Our children  
are our most  
important  
assets”

Rodney Erickson



## Assets

31 Dec 2016

31 Dec 2015

### Non-current Assets

Property, Plant & Equipment

790 971

475 779

### Current Assets

Trade and Other Receivables

74 179

92 938

Cash and Cash Equivalents

2 679 280

2 868 472

**2 753 459**

**2 961 410**

### Total Assets

**3 544 250**

**3 437 189**

## Equity & Liabilities

31 Dec 2016

31 Dec 2015

### Equity

Reserves

1 337 749

1 960 277

Retained Income

1 914 982

1 139 747

**3 252 731**

**3 100 024**

### Liabilities

#### Current Liabilities

Non Current Liabilities

Other financial liabilities

202 000

202 000

#### Current Liabilities

Trade and other payables

89 519

135 165

### Total Liabilities

**291 519**

**337 165**

### Total Equity and Liabilities

**3 544 250**

**3 437 189**

# Staff and Volunteers

as at  
31 Dec 2016



## TEACHERS

Michelè Lorton, Karin von Maltzahn, Rumbidzai Nyamakura Kamber, Johanna Gardiner, Suzette Nortje, Karin Sinclair, Nadia Visser, Liesl Fourie

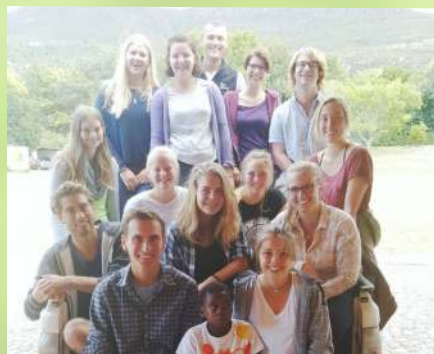
## MAINTENANCE

Clint Fouche, Andile Eric Njena, Siyamthemba Ndzeke, Gert Shepherd



## VOLUNTEERS 2015/2016

Johanna Tannhäuser, Katharina Kleimann, Marlene Döring, Johanna Lau, Katharina Bittner, Efthimia Papadopoulos, Verena Schilling, Flora Trautwein, Annalena Grupp, Simon Erhardt



## VOLUNTEERS 2016/2017

Jana Dolinga, Niklas Adt, Annalena Hauffe, Franziska Nagel, Johanna Rieger, Melanie Smekal, Miriam Zielonka, Elias Schiafone, Daniela Praml, Andreas Adamis, Annika Hofmann, Franca Burger, Alicia Böllinger, Marian Ultes

## THERAPEUTIC SERVICES

Julio Laset, Luise Boedinghaus, Estelle Venter, Annetta Saaïman, Beatrice Pook, GERALYN Laset, Daniel Kamber, Lizelle de Villiers, Felicia Jordaan, Lianna Morrison, Elana Nel, Nicole Knowles, Ashleigh Temple-Camp, Christoph Reppel



## MANAGEMENT AND ADMINISTRATION

Julio Laset, Jeanne-Marié Botha, Michelle van Zyl, Nicoleen Potgieter, Genevieve Linney, Geraldine May

## CLASS ASSISTANTS

Mapaseka Nyila, Valda Coetzee, Lonel Hansen, Nontombi Xungu, Phumla Prince



## HOMELIFE

Angela Coetzee, Hans Peyerl, Katrina Botha, Lilian Teunissen, Elaine Dyers, Margaret Steneveld



# Mission Statement

Camphill School Hermanus is a therapeutic community in a rural environment setting for children and young adults with special needs. We use a Curative educational approach in home, school and therapies. We aim to uphold the dignity of the human being by addressing the spiritual uniqueness in everyone, creating opportunities for developing individual potential.

# Vision

We envisage Camphill School Hermanus as a thriving centre of Curative Education for children and young adults with special needs. We are a committed community of appropriately trained people, adequately resourced, working with sound communication and professional practices, striving to identify and meet new challenges.



## HELP US TO HELP CHILDREN WITH SPECIAL NEEDS



### Become a Friend of Camphill School and help us support these special children

All donations made to Camphill School by South Africans are tax deductible as per Section 18 A of the South African Income Tax Act.

Non-profit Organisation 003-320 NPO  
Section 21 Incorporated Association not for gain. PBO.

#### Banking Details

FNB Hermanus | Acc name: Camphill School  
Acc no: 524 7070 4936 | Branch: 200412 | Swift Code FIRNZAJJ

PO Box 68, Hermanus 7200, South Africa  
t +27 (28) 312 4949 | f 086 522 1749  
genevieve@camphill-hermanus.org.za | www.camphillschool.org.za



WE THANK

Dr Mickey Fauël **Dental Surgeon** - B.D.S (Wits); L.D.S RCS (England)  
and PSG Wealth Hermanus  
for jointly sponsoring this Annual Report